

## QCS-MG-A360-1

### SMA Male

Features:  
\* Low VSWR

Applications:  
\* Wireless  
\* Radar  
\* Instruments  
\* Electronics

#### Electrical

Frequency: DC~26.5GHz  
VSWR: 1.25 max.  
Impedance: 50Ω

#### Mechanical

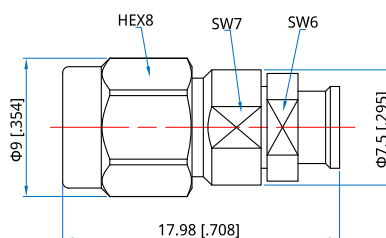
RF Connector: SMA Male  
Mating Cable: QA360  
Outer Conductor: Passivated Stainless Steel  
Inner Conductor: Gold Plated Brass

#### How To Order

**QCS-MG-A360-1**

Customization is available upon request.

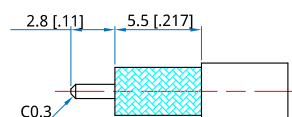
#### Outline Drawings



Unit: mm [in]

Tolerance: ±0.2mm [±0.008in]

#### Stripping Reference



Unit: mm [in]

Tolerance: ±0.1mm [±0.004in]